



**AMSTEK**

**METAL**

**STAINLESS STEEL**

---

**Quality and service with a personal touch**

---

## About Amstek Metal

Operated by the Stevens family and in its fourth generation, Amstek Metal draws on over 100 years experience in supplying specialty steels to precision metal manufacturing industries.

As a two-location U.S. service center with both general and dedicated inventory positions, Amstek Metal offers a variety of products for a diverse customer base. Markets served include: Appliance, Automotive, Consumer Products, Electronics, Energy, Industrial Products, Medical and Telecommunications. Our primary inventories include stainless steel flat and round products as well as high carbon strip and wire items for specific applications.

## Mission

To profitably source and deliver the world's finest wire and specialty strip materials to our customers.

We will continue to develop long-term partnerships with our customers, co-workers, and suppliers.

## Solutions

- Global Supply Partners to Meet Specific Production and Procurement Requirements
- Precision Processing and Measuring Equipment
- Inventory Management Systems
- Continuous Capital Improvement Programs to Support the Market
- Prototype Quantities Available for PPAPs
- RoHS and DFARS Compliant
- Quality Control Systems with SPC and EDI Capabilities

# About Amstek Metal





## The precision you expect

Our shimless tooling enables us to control width tolerance down to  $\pm .001$  and burr height to less than 5% of metal thickness. Combined with less than commercial camber, the quality strip you receive can feed through complicated forming tools.

## We welcome tough jobs

Our skilled and committed personnel are trained to meet or exceed engineered requirements to closer than commercial tolerances. The capabilities of our slitting lines allow us to slit .100" and wider in gauges from .001" to .062".

## Benefit from treated edges

Skived edges are available in widths from .187" to 2" and gauges from .008 to .032. A No. 5 deburred edge is available in widths from .187" to 12.00" and in gauges from .001" to .062".

## Charting the path to perfection

Statistical process control procedures ensure you have the best quality along with the traceability of every coil. Using our automated measure-link system, we provide gauge and width chart analysis upon request. Our Quality Improvement Teams continuously strive for zero defects.

## Packaging

Pancake Coils With Spacers

Oscillated Coils

Shrouded Skids

Custom Crates And Skids As Requested

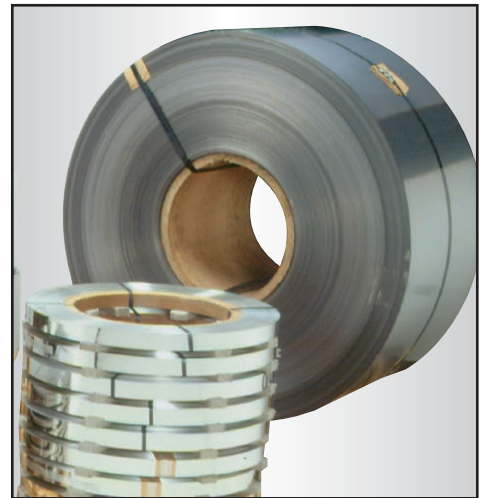
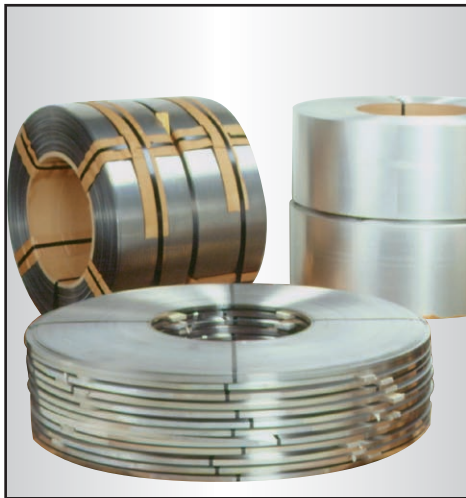
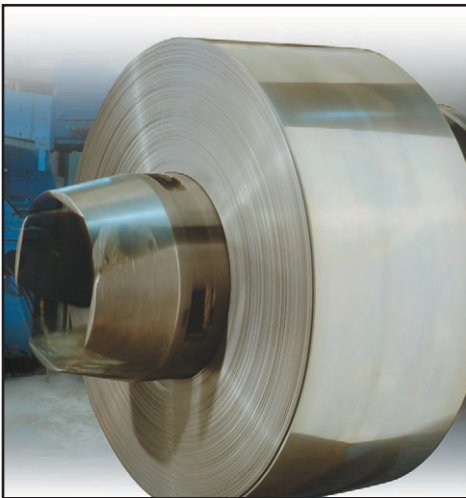


# Stainless Steel Strip

## STRIP INVENTORY STOCKING PROGRAMS

| Gauge Range | Stainless Steel Grades   |                     |      |      |      |      |          |      |          |             | Standard Gauge Tolerance |
|-------------|--------------------------|---------------------|------|------|------|------|----------|------|----------|-------------|--------------------------|
|             | Standard Gauge Tolerance | Annealed & Tempered |      |      |      |      | Annealed |      | Edges    |             |                          |
|             |                          | T301                | T302 | T304 | T316 | T321 | T409     | T430 | #1 Round | #5 Deburred |                          |
| .002-.007   | +/- .0005                |                     | •    |      |      |      |          | •    | •        | •           | +/- 5%                   |
| .007-.009   | +/- .00075               | •                   | •    |      |      |      |          | •    | •        | •           | +/- 5%                   |
| .010-.013   | +/- .00075               | •                   | •    | •    | •    | •    |          | •    | •        | •           | +/- 5%                   |
| .014-.015   | +/- .00075               | •                   | •    | •    | •    | •    |          | •    | •        | •           | +/- 5%                   |
| .016-.020   | +/- .0001                | •                   | •    | •    | •    | •    |          | •    | •        | •           | +/- .001                 |
| .021-.023   | +/- .0001                | •                   | •    | •    | •    | •    |          | •    | •        | •           | +/- .001                 |
| .024-.026   | +/- .0001                | •                   | •    | •    | •    | •    |          | •    | •        | •           | +/- .001                 |
| .027-.029   | +/- .0001                | •                   | •    | •    | •    | •    | •        | •    | •        | •           | +/- .001                 |
| .030-.032   | +/- .00015               | •                   | •    | •    | •    | •    | •        | •    | •        | •           | +/- .0015                |
| .033-.035   | +/- .00015               |                     |      | •    | •    | •    | •        |      |          | •           | +/- .0015                |
| .036-.040   | +/- .0002                |                     |      | •    | •    | •    | •        |      |          | •           | +/- .002                 |
| .041-.050   | +/- .0002                |                     |      | •    | •    | •    | •        |      |          | •           | +/- .0025                |
| .051-.069   | +/- .0002                |                     |      |      |      |      | •        |      |          | •           | +/- .003                 |

Less than Standard Gauge Tolerances are stocked and available  
Other stainless steel grades and finishes are available upon request  
Stainless steel sheets available as custom programs



# Stainless Steel Strip and Sheet Inventory



## Customer Satisfaction

Amstek Metal supplies stainless wires in a variety of packages and tempers—from wrapped coils to heavy weight reels, cores, and carriers for longer run production.

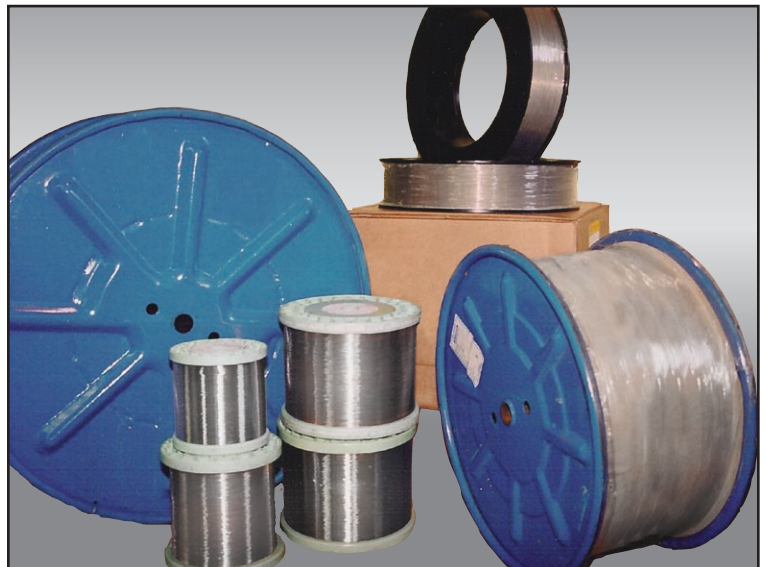
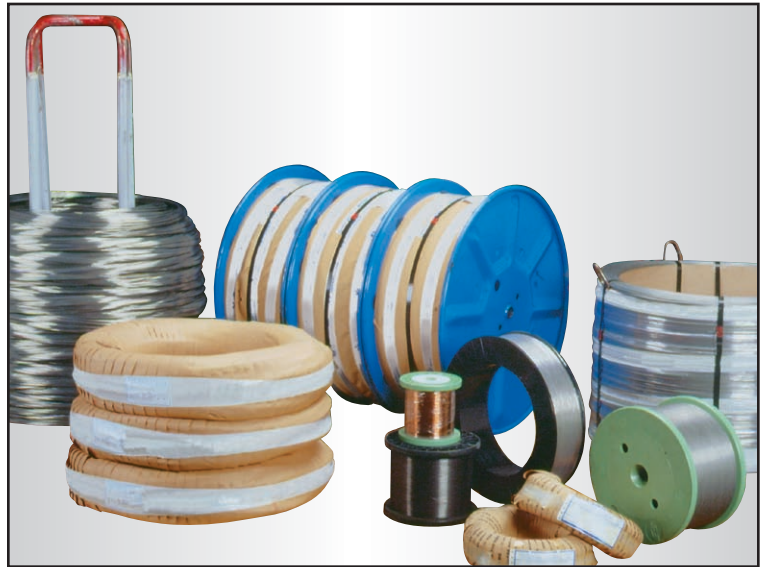
As part of our ISO 9001: 2000 system, we require 100% material traceability. In addition, we measure on-time delivery performance to meet our goal of 100% reliability. Meeting or exceeding customer requirements will continue to be our number one goal.

## Packaging

- Wrapped Coils
- Continuous Coils On Carriers
- Steel Reels—22" and 30"
- Variety Of Plastic Spools

## Applications

- General Spring
- Medical
- Electronics & Information Technology
- Forming
- Home Appliance & Hardware
- Automotive



# Stainless Steel Wire and Shapes

## WIRE INVENTORY STOCKING PROGRAMS

| PACKAGING SPECIFICATIONS  |                            |         |           |       |           |            | Stainless Steel Spring Wires |                                  |                            |
|---|----------------------------|---------|-----------|-------|-----------|------------|------------------------------|----------------------------------|----------------------------|
|   |                            |         |           |       |           |            | T302                         |                                  |                            |
| Gauge Range   | Package                    |         | Barrel ID | Width | Flange OD | Arbor Hole | Weight (Lbs.)                | Non-Metallic Coated<br>ASTM A313 | Nickel Coated<br>ASTM A313 |
| .008-.020   | S<br>P<br>O<br>O<br>L<br>S | DIN 250 | 6.3       | 7.8   | 9.8       | 0.87       | 44 Max                       | ●                                | ●                          |
| .008-.032   |                            | DIN 355 | 8.8       | 7.8   | 14        | 1.4        | 88 Max                       | ●                                | ●                          |
| .008-.053   |                            | SH 390  | 12        | 4     | 15        | 12         | 30 Max                       | ●                                | ●                          |
| .008-.053   |                            | SH 460  | 12        | 4     | 18        | 12         | 50-90                        | ●                                | ●                          |
| .020-.060   | R<br>E<br>E<br>L<br>S      | 22"     | 14        | 10.8  | 22.0      | 1.3        | 330 Max                      | ●                                | ●                          |
| .020-.118   |                            | 30"     | 16        | 11.8  | 30.0      | 1.3        | 770 Max                      | ●                                | ●                          |
| .020-.118   |                            | Z.2     | 14        | 11.8  | 26.9      | 14         | 880                          | ●                                | ●                          |
| .060-.256   |                            | Z.3     | 21.6      | 22    | 33.5      | 21.6       | 2200                         | ●                                | ●                          |
| Gauge Range   |                            |         | ID Range  |       | OD Range  |            | Weight (Lbs.)                |                                  |                            |
| .008-.012   |                            |         | 6-7       |       | 10-12     |            | 20 Max                       | ●                                | ●                          |
| .013-.017   |                            |         | 6-8       |       | 11-13     |            | 25 Max                       | ●                                | ●                          |
| .018-.019   |                            |         | 6-8       |       | 11-13     |            | 45 Max                       | ●                                | ●                          |
| .020-.030   |                            |         | 9-11      |       | 13-15     |            | 75-130                       | ●                                | ●                          |
| .031-.055   |                            |         | 11-13     |       | 18-22     |            | 135-165                      | ●                                | ●                          |
| .056-.079   |                            |         | 19-21     |       | 26-30     |            | 550-660                      | ●                                | ●                          |
| .080-.157   |                            |         | 19-21     |       | 26-30     |            | 630-660                      | ●                                | ●                          |
| .158+   |                            |         | 24-26     |       | 33-37     |            | 1,100-1,500                  | ●                                | ●                          |
| .163+   | CARRIERS                   |         | 19-26     |       | 25-30     |            | 1,100-2,200                  | ●                                | ●                          |
| Stainless Steel Wires T304, T316, T321, and 17-7PH<br>Stainless Forming Wires In All Finishes and Tempers<br>Customized Packaging and Products<br>Shaped Wires Available As Custom Programs |                            |         |           |       |           |            |                              |                                  |                            |

# Stainless Steel Wire Inventory

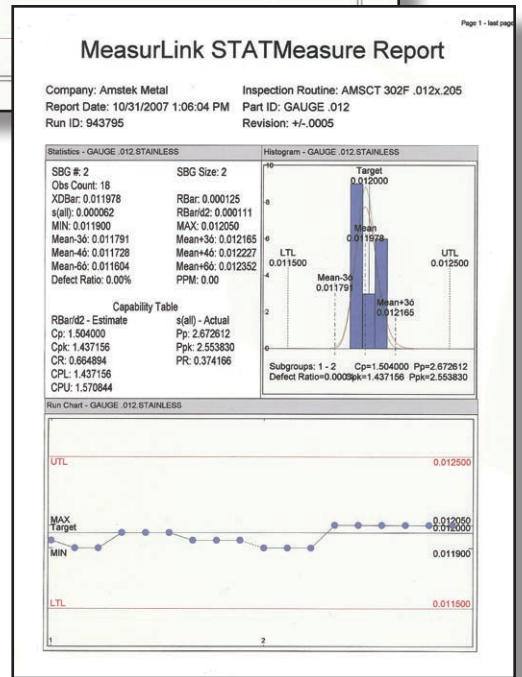
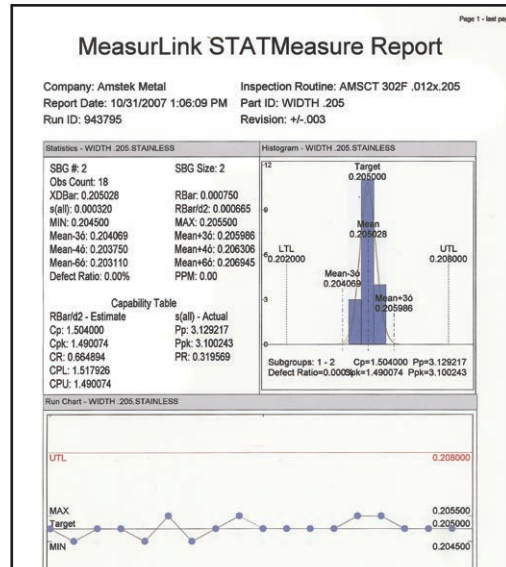
**COMMITMENT TO EXCELLENT SERVICE  
QUALITY POLICY**

- Our Quality Objective is complete customer satisfaction.
- We will provide products and services that fully meet the requirements of our customers and coworkers—on-time every time.
- We will base our Quality Management System on continual improvement, and defect prevention. We will measure these quality objectives against our internal improvement standards.
- We will thoroughly understand our jobs and the systems that support us.

Amstek Metal personnel are working to continuously source the needs of customers and to establish either direct shipment supply or stocking programs for "Just-In-Time" deliveries.

Amstek Metal customers experience consistent high-quality products and timely service. Stocking locations at Joliet, IL and Farmington, CT are ISO 9001: 2000 certified facilities. Conformance to these standards is maintained through internal audits and employee education and training.

Amstek Metal material suppliers are carefully selected and monitored as part of the ISO 9001: 2000 quality system. All material is specified and 100% traceable.



**Quality**

# AMSTEK METAL

## MIDWEST

2408 W. McDonough  
Joliet, IL 60436

Ph: **800-551-9473**

or 815-725-2520

Fax: 815-725-2663

## NORTHEAST

1838 New Britain  
Farmington, CT 06032

Ph: **800-359-2930**

or 860-679-7717

Fax: 860-679-7716

[www.amstekmetal.com](http://www.amstekmetal.com)  
e-mail: [info@amstekmetal.com](mailto:info@amstekmetal.com)